



## Benetti Classic 132 | 2018

New yacht

Price in Europe

**By request**

VAT not paid

### Short description

Available in March 2018!Specila conditions - Benetti 132 for 2018 season!

### Specifications

Length overall	40.24 m
Beam overall	8.18 m
Draft	2.10 m
Material	GRP
Cabines	5 + 4
Head compartments	5 + 4
Engine	2 x MTU 12V 2000 M72 1450 hp
Fuel capacity	45000 l
Water capacity	7200 l
Max speed	15.50 knots
Cruising speed	14.50 knots
Range	3500 miles



Main saloon



Экстерьер Benetti Supreme 132



Main saloon



Экстерьер Benetti Supreme 132



Экстерьер Benetti Supreme 132



Main deck dining



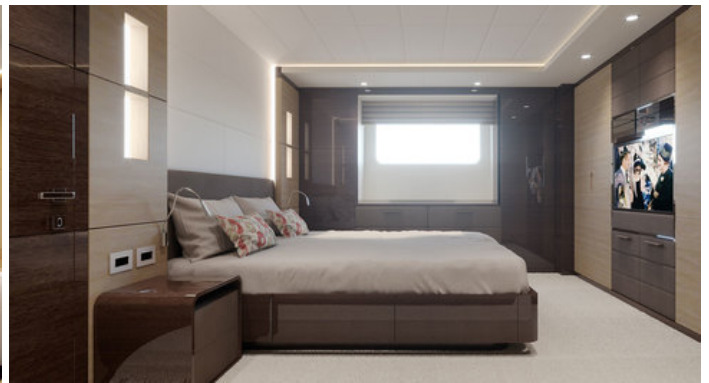
Кормовая часть верхней палубы



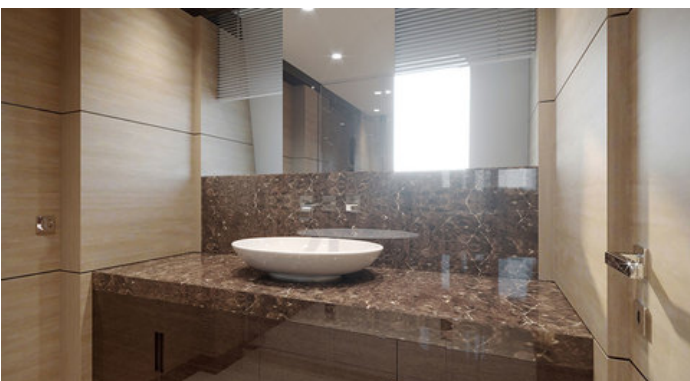
Owner's cabin



Салон на главной палубе



VIP cabin



Owner's head



Салон на главной палубе



Owner's head



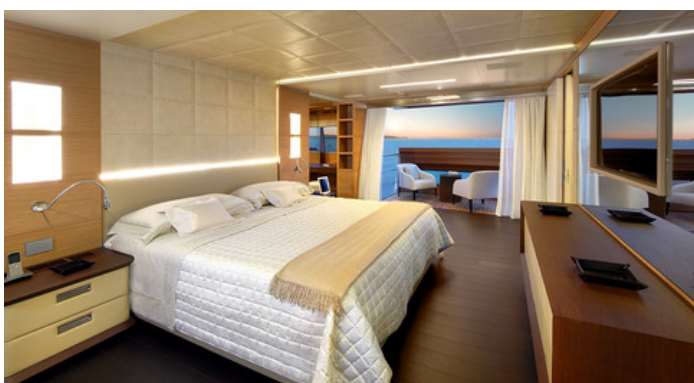
Обеденная зона в салоне на главной палубе



Каюта владельца



ViP head



Каюта владельца



Балкон в каюте владельца



Балкон в каюте владельца



VIP каюта

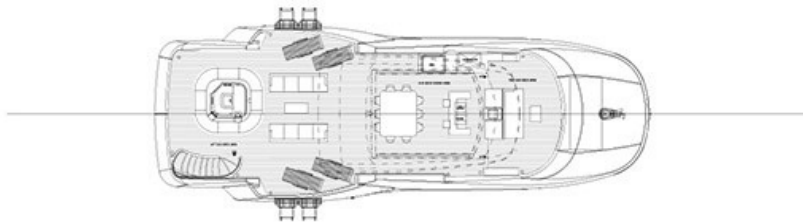


Гостевая каюта

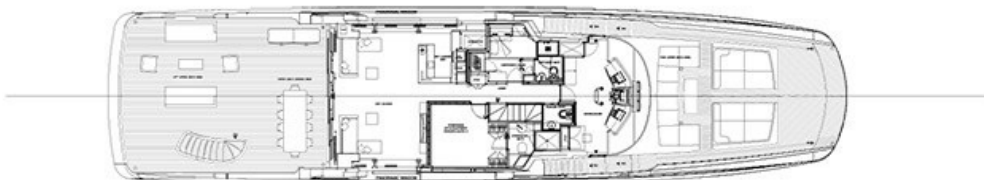
Общий вид



Сандек



Верхняя палуба



## Technical characteristics

---

Length overall	40.24 m	Range	3500 nm
Beam overall	8.18 m	Fuel capacity	45000 l
Draft	2.10 m	Water capacity	7200 l
Engine	2 x MTU 12V 2000 M72 1450 hp	Cabins	5 + 4
Max speed	15.50 knots	Berths	10 + 7
Cruising speed	14.50 knots	Head compartments	5 + 4
		Material	GRP
		Interior design	Francois Zuretti
		Builder	Stefano Righini

### Regulations UNI ISO 8666

The levels of performance described apply to a standard craft (with standard equipment installed) with clean hull, propeller and rudders. Moreover, it is specified that such levels of performance were achieved under favourable sea and wind conditions (1 on the Beaufort scale and 1 on the Douglas scale); in the case of diverse or less favourable sea conditions performance levels may vary considerably.

### EC Approved

Azimut reserves the right to modify the specification and characteristics of its vessels at any time.